



Device Application Manager Plug-in for HP Web Jetadmin

This technical brief discusses the HP Device Application Manager plug-in that can be added to HP Web Jetadmin 6.5 to gain additional functionality.

Overview

Newer HP devices, such as printers, include an embedded virtual machine that allows for running applications to provide extended solutions. Applications can be developed to run under the embedded virtual machine on the device, providing additional functionality such as job accounting, etc.

The Device Application Manager is a plug-in to HP Web JetAdmin 6.5 that can install, list, and remove any device applications that are written to run under the embedded virtual machine on a device.

The Device Application Manager is comprised of two components:

- HP Web Jetadmin application plug-in
- Management device application

The HP Web Jetadmin application plug-in is installed into HP Web Jetadmin and is responsible for adding, listing, and removing device applications. It appears in HP Web Jetadmin as a tab under a group of devices or an individual device as *Application Manager*.

The management device application is loaded onto the device by the HP Web Jetadmin application plug-in and is responsible for allowing the HP Web Jetadmin application plug-in to list and remove device applications.

These components are a matching pair. One component cannot function entirely without the other.

Note: If only the HP Web Jetadmin application plug-in is installed into HP Web Jetadmin without the management device application being installed onto the device, the HP Web Jetadmin application plug-in will not be able to list and remove any applications on the device. It will only be able to load applications onto the device. For example, the HP Web Jetadmin application plug-in must be able to at least load applications since it will be

responsible for loading the management device application onto the device.

Supported Printers

The HP Device Application Manager supports HP devices with Embedded Web Server (virtual machine) and a disk accessory. Examples of HP devices that may contain this functionality include:

- HP Color LaserJet 4550
- HP LaserJet 4100
- HP LaserJet 9000

Installation

HP Web Jetadmin 6.5 offers a Product Update feature that can be used to automatically download and install the Device Application Manager plug-in directly from the web. HP Web Jetadmin must have access to the Internet in order to perform the automated function. If a secure proxy is in place, HP Web Jetadmin can be instructed to attempt to use proper credentials to penetrate the secure proxy. If HP Web Jetadmin does not have access to the Internet, the Device Application Manager plug-in can be manually downloaded and installed

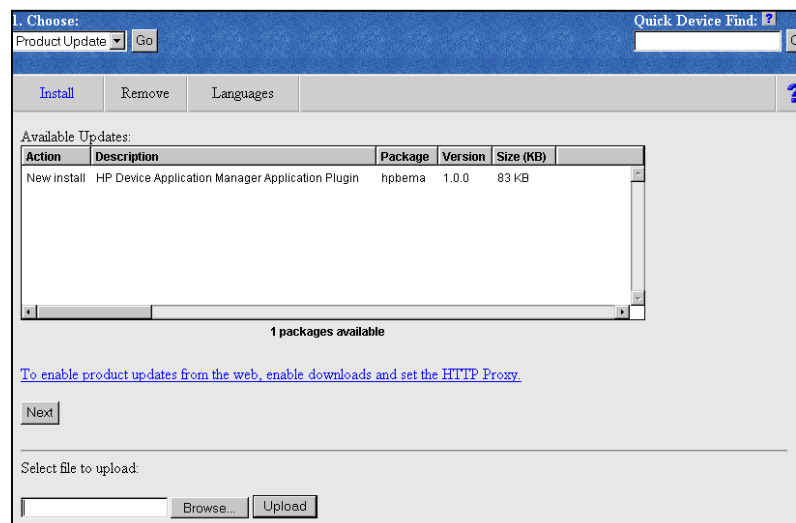


Figure 1

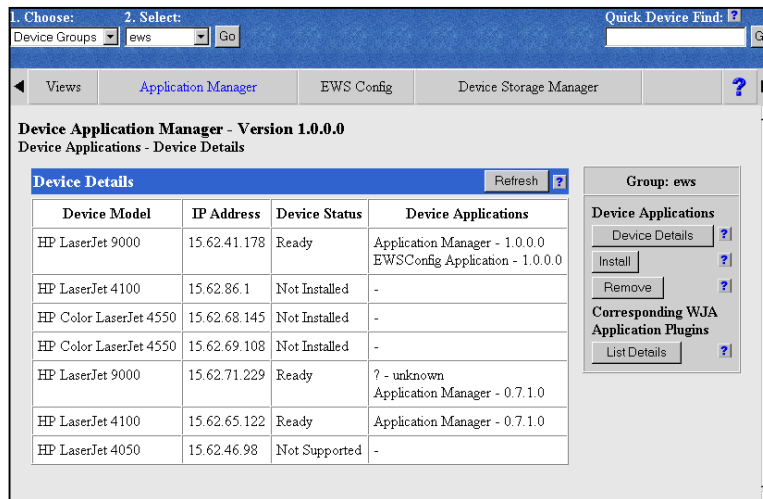


Figure 2

through Product Update by browsing to the subdirectory where the plug-in was downloaded. The plug-in can be found on the web at the following location:

www.hp.com/go/wja_components

To install the Device Application Manager into HP Web Jetadmin, select *Product Update*, then click *Go* under the *Choose* menu (see Figure 1). Under the *Install* tab, the first box will display a list of available plug-ins on the web if HP Web Jetadmin has been configured to access the internet for downloads. Otherwise, the box below can be used to browse for plug-ins that have been previously downloaded to the hard drive and upload to appear in the box above. Once the Device Application Manager plug-in appears in the box above, highlight it and click *Next* to begin the installation.

The HP Web Jetadmin application plug-in is now successfully installed, which allows the Device Application Manager to install applications onto a device. However, in order to use the Device Application Manager to remove and list device applications as well, the management device

application must first be loaded onto any desired devices.

Accessing the Device Application Manager

Once installed, the *Application Manager* tab can be accessed from the following locations:

- Group of devices
- Single device

If accessed from a group where there are many unsupported devices in the group, the Device Application Manager page can take a substantial amount of time to load. Therefore, it is highly recommended to create groups of devices that have disks installed and EWS capability before using the Device Storage Manager.

The Device Application Manager cannot be accessed from the list of All Devices screen in HP Web Jetadmin since this list will more than likely contain many devices that do not contain disks or have EWS capability.

Managing Printer Applications

The *Application Manager* tab can be used to provide the following functionality:

- list applications running on the devices
- obtain details about the applications on the devices
- invoke management operations on applications on the devices
- install and remove applications on the devices

Groups of Devices

When clicking on the *Application Manager* tab from a group of devices, a *Device Details* box will be displayed, which contains the following details pertaining to each device in the group:

- device model name
- IP address
- device status
- device applications - details of any loaded applications.

The *Device Status* column can indicate the following about each device:

- Ready - management device application is loaded and ready
- Not connected - not responding or connected to the network
- Not supported - does not have a disk or is not EWS capable
- Not installed - does not have the management device application loaded

The *Device Applications* column will indicate all applications loaded onto the device and their respective versions.

The *Install* and *Remove* tabs provide the capability to add or remove applications to/from the device. This action will be performed on the entire group of devices. If it is desired to

load or unload applications to/from just a single device, access the *Application Manager* tab from the menu bar when viewing the single device.

Clicking on the *List Details* tab under *Corresponding WJA Application Plugins* will allow for viewing the version of the HP Web Jetadmin application plug-in that is loaded onto HP Web Jetadmin (see Figure 3).

Individual Devices

The *Application Manager* tab is also available when viewing an individual device under HP Web Jetadmin. The *Device Details* will be displayed, just as with the group view, but the details and actions will pertain only to the individual device.

Summary

The HP Device Application Manager plug-in to HP Web JetAdmin 6.5 provides the ability to manage applications on HP devices that are capable of running applications. In the future, users will be able to choose from many available applications that will provide additional functionality to devices. HP Device Application Manager will be the tool of choice for installing these applications quickly and easily on devices.

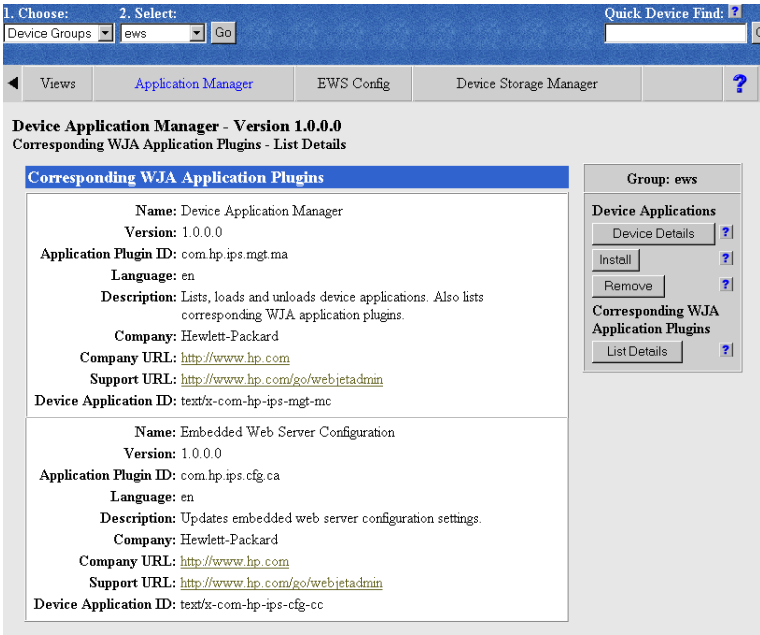


Figure 3